

COLE NAGODA

SONG OF LENSES

for violoncello, piano, and fixed media

PIANO

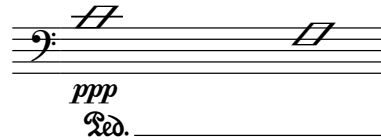
Notation Key

tam-tam effect



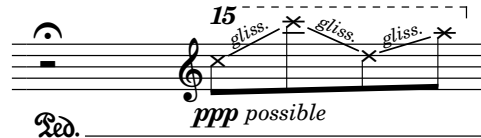
quickly sweep with the fingers and nails across the low strings of the piano (low to high), creating as loud and thunderous a sound as possible

gong effect



with the flat palm of the hand, hit the strings around the large diamond notehead (the resulting sound will not be loud)

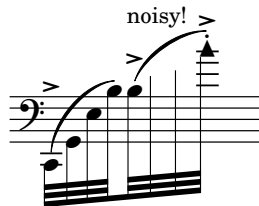
wind effect



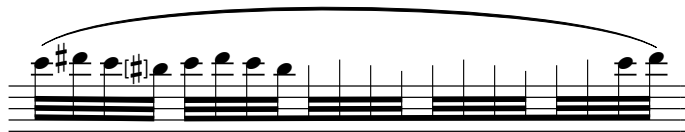
lightly glissando with the nails approximately to and from the x-shaped noteheads

CELLO

Indeterminate high note



continue in a similar manner



Notes for fixed media

Connect a laptop to the hall speaker system for the fixed media playback (.wav or .mp3 file).

The laptop setup can be on stage or off stage. If on stage, the pianist can initiate the playback. If off stage, an additional person will be necessary.

The cellist will cue the beginning of TRACK 1 after their fermata in m. 1. From this point on, the cellist and pianist must listen to and play with the fixed media. There is no need for a click track.

The end of TRACK 1 is the end of the fixed media component of this piece.

SCORE

song of lenses

COLE NAGODA (2024)

duration: c. 13'00"

for violoncello, piano, and fixed media

transparent, honest, almost naïve ♩ = 60

begin TRACK 1

MIDI R

MIDI L

Violoncello

pp poco vib. throughout

f

3

R

L

Vc.

pppp

A

3

R

L

Vc.

mf

pppp

3

B

Musical score for section B, measures 21-26. The score is written for three staves: Right Hand (R), Left Hand (L), and Violin (Vc.). The R and L staves are grand staves. The Vc. staff is in treble clef. The music features a piano accompaniment with chords in the R hand and a melodic line in the L hand. The Vc. part consists of a series of sustained notes with a long slur. Dynamics include *ff* and *ff*. There are triplets in the L hand and Vc. part.

Musical score for section B, measures 27-33. The score is written for three staves: Right Hand (R), Left Hand (L), and Violin (Vc.). The R and L staves are grand staves. The Vc. staff is in treble clef. The music continues with piano accompaniment and a melodic line in the L hand. The Vc. part continues with sustained notes. Dynamics include *ff*. There is a triplet in the Vc. part.

C

Musical score for section C, measures 34-39. The score is written for three staves: Right Hand (R), Left Hand (L), and Violin (Vc.). The R and L staves are grand staves. The Vc. staff is in treble clef. The music features a piano accompaniment with chords in the R hand and a melodic line in the L hand. The Vc. part consists of a series of sustained notes with a long slur. Dynamics include *f*, *p*, *pp*, *mf*, *p*, *ppp*, *mp*, *pp*, *cresc.*, *p*, and *mp*. There are triplets in the L hand and Vc. part.

40

R

L

Vc.

(G)

D

ppp

p

mf

f

ppp

(cresc.)

mf

f

pp

46

R

L

Vc.

E [until **F** the synchronization between cello and MIDI need only be approximate]

to cello arco sound

p

mp

ppp

p

poco

mp

pp non cresc.

f

ppp

52

R

L

Vc.

(C#)

to cello pizz. sound

ff

p

sub. f

ff

p

sub. fp non cresc.

sub. mf > pp

[hard accent]

[soft accent]

57

R

C

L

Pno.

Vc.

F

G.P.

cello bartok pizz. sound

mf *mp* *pppp* *espr.*

p *ff* *bartok pizz.* *to pitched down cello arco sound*

ff *p* *ppp*

tam-tam effect

f *8* *let ring*

10

10

10

10

10

71

R

C

L

Vc.

G

(Ab)

[MIDI and cello converse until **H**]

p *mp* *ppp* *pppp* *p*

gestural: as fast and loud as possible

from another universe

ff *sub. pp poco vib.* *ppizz. simile* *ff*